



[//lommy asset]

Superior and reliable GPS tracker for monitoring of all valuables - with rapidly positioning if required

Lommy Asset, a small stand-alone GPS tracker, monitors the exact location of all your belongings.

A battery-powered device capable of fast positioning gives you a unique solution.

The option of battery replacement ensures, that your Lommy Asset will be functional for many years to come.

Receive daily reports in an interval of your choice even with the option for rapidly positioning down to a 2 minutes interval.

Activate the motion sensor and you will get a notification, when movements occur.

If your assets are stolen or lost – Lommy Asset provides you the location with the accurate built-in GPS module.

To monitor your belongings even closer, it is possible remotely to adjust the report interval from hours down to minutes, depending on your needs.

Lommy Asset is a battery-driven device. If it runs out of power, battery change is easy.



Lommy Asset

Keep track

Accurate GPS tracker for reliable tracking of all your belongings. Monitor easily the location on web, smartphone or tablet. Set up email alerts to receive warnings if unwanted incidents occur.



Accurate positioning

Reliable and accurate positioning based on advanced GSM triangulation combined with accurate GPS positions.



On the move

Activate the built-in motion sensor and Lommy Asset will send positions, if your valuables are moving. Moreover, activate the notifications to get alerts.



Battery powered

Efficient power management combined with secure technology ensures optimal utilization and makes Lommy Asset a great investment.



Easy to mount, easy to use

Lommy Asset is battery-driven and easy to install. No assembly or wiring is required. Simply hide the small GPS tracker on your belongings and you are ready.



Track down, if lost

Track the position of your lost assets in a secure way by using a combination of GSM and GPS. As the device is small, easy to hide and difficult to trace, the recovery rate is extremely high.



Secure and reliable tracking

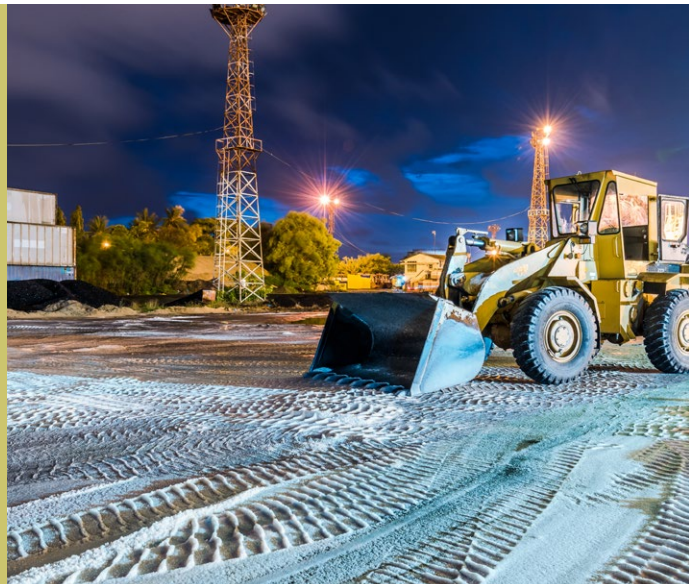
Lommy Asset, a stand-alone GPS tracker for monitoring all your belongings, with the option for fast positioning, if needed.

- Accurate GPS technology combined with GSM triangulation provides reliable monitoring.
- Easy to adjust functions and settings ensures a fully flexible and efficient tracking solution.
- Stay informed and keep the full overview of all your Lommy Asset devices from a smartphone, computer or tablet.

Key features:

- Monitor the location using accurate GPS technology
- Positioning with advanced GSM triangulation
- Enable the G-sensor and track the movements
- Battery powered with efficient power management
- Small, suitable for assets of all sizes
- Adjustable report interval, down to minutes
- Replaceable battery
- Set up custom alerts
- Remote management of settings and alerts
- Easy to use, easy to hide, no wires needed

Explore more features in the **Technical Data Sheet**



Monitor your assets on various platforms – 24/7

Use our monitoring system or your own system to keep track of your entire fleet via phone, tablet or computer.

TrackEye

Basic, easy to use platform incl. real-time map, historical data and custom alarms.

LommyFleet

Complete fleet management platform incl. real-time map with historical trails, custom alarms, geofence, report generator and maintenance planning.

White Label

Customised, branded platform, based on our systems.

System integration (API)

Use your own system. We will provide open source software and API.

Please get in touch to learn more:

flextrack@flextrack.dk

Server and data security
ISAE 3402 certified. (Referring to ISO 27002)

Flextrack, Høgevej 19,
DK-6705 Esbjerg Ø, Denmark

[version 1.1]